

Handbells

Reproducible Part for Handbells

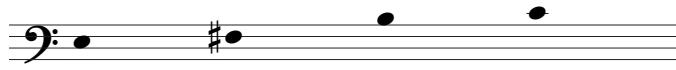
Carol of the Birds

SSA and Handbells or Piano

Traditional Catalan carol

Craig Carnahan

Handbells Used: 4



Sustained, with a sense of mystery ♩ = 69

Tune: *EL CANT DELS OCELLS*, traditional Catalan carol (PD).

Setting: Craig Carnahan (b. 1951), ASCAP, newly composed, and copyright © 2019 Birnamwood with this publication.

Copyright © 2019 Birnamwood Publications (ASCAP)

A division of MorningStar Music Publishers, Inc., St. Louis, MO

All rights reserved. Printed in U.S.A. 1.800.647.2117 www.MorningStarMusic.com

Purchaser may reproduce this part for handbells provided the above copyright notice is included.

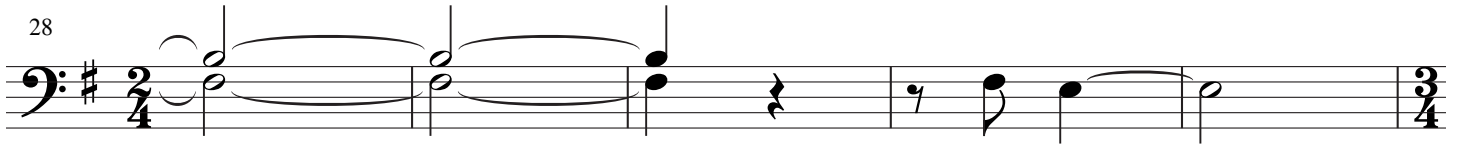
MSM-50-1143

Reproducible Part for Handbells
(page 2 – Carol of the Birds)

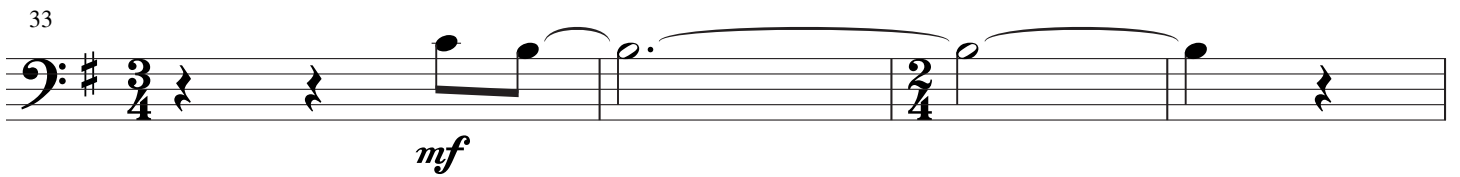
25



28

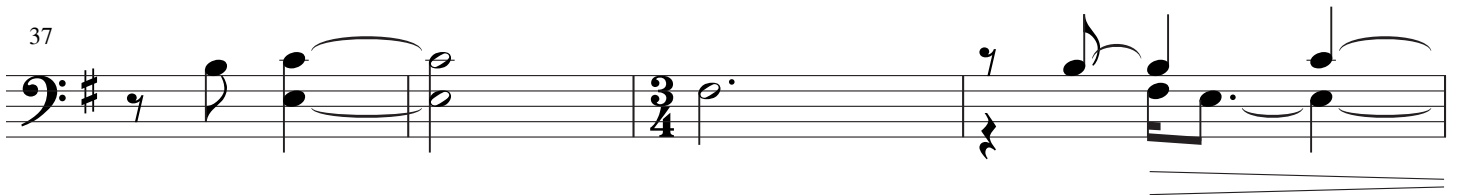


33

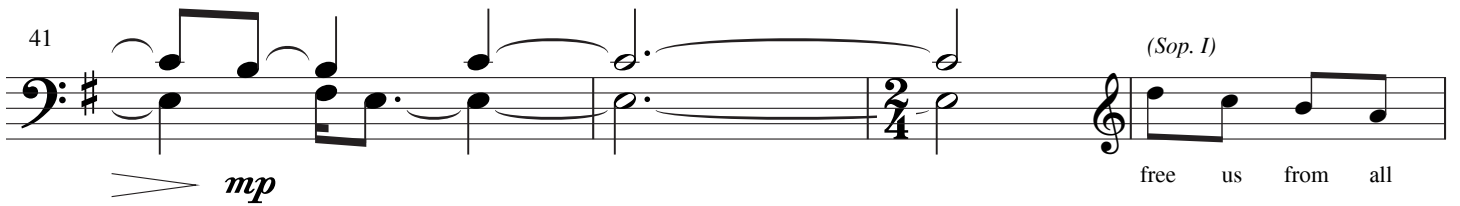


mf

37




41



mp

(Sop. I)



free us from all

45

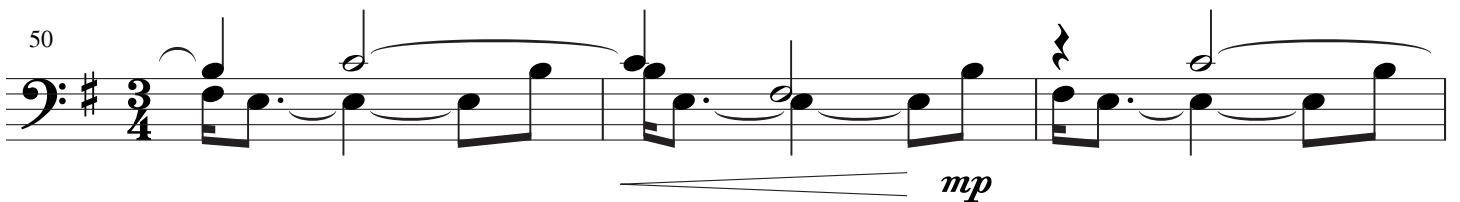


sin and— ban - ish ev - 'ry sad - ness!"

p

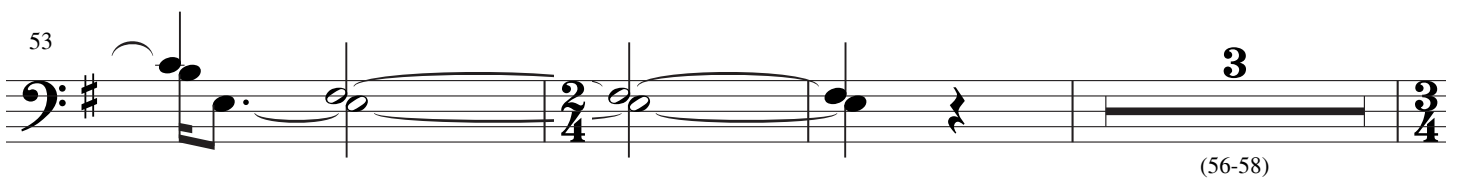
Play

50



mp

53



3

(56-58)

Reproducible Part for Handbells
(page 3 – Carol of the Birds)

59

mf

(63-64) *mp*

68

72

76

mf

80

(82-84)

86

f

90

Reproducible Part for Handbells
(page 4 – Carol of the Birds)

94

mp

This musical staff covers measures 94 to 97. It begins with a whole rest in measure 94. In measure 95, there is a quarter rest followed by a quarter note G4. Measure 96 starts with a 3/4 time signature and contains a half note G4, a quarter note A4, and a quarter note B4. Measure 97 contains a half note G4, a quarter note F4, and a quarter note E4. The dynamic marking *mp* is centered below the staff.

98

This musical staff covers measures 98 to 101. Measure 98 has a whole note G4. Measure 99 has a quarter rest followed by a quarter note G4. Measure 100 has a half note G4, a quarter note A4, and a quarter note B4. Measure 101 has a half note G4, a quarter note F4, and a quarter note E4. The dynamic marking *mp* is centered below the staff.

102

(104-105)

This musical staff covers measures 102 to 105. Measure 102 has a whole note G4. Measure 103 has a quarter rest followed by a quarter note G4. Measure 104 has a whole rest. Measure 105 has a half note G4, a quarter note A4, and a quarter note B4. A bracket above the staff spans measures 104 and 105, with the number '2' above it. The dynamic marking *mp* is centered below the staff.

107

p

This musical staff covers measures 107 to 110. Measure 107 has a quarter note G4, a quarter note A4, and a quarter note B4. Measure 108 has a half note G4, a quarter note A4, and a quarter note B4. Measure 109 has a quarter rest followed by a quarter note G4. Measure 110 has a half note G4, a quarter note A4, and a quarter note B4. The dynamic marking *p* is centered below the staff.

rit.

110

mf

This musical staff covers measures 110 to 113. Measure 110 has a quarter note G4, a quarter note A4, and a quarter note B4. Measure 111 has a quarter rest followed by a quarter note G4. Measure 112 has a half note G4, a quarter note A4, and a quarter note B4. Measure 113 has a half note G4, a quarter note A4, and a quarter note B4. The dynamic marking *mf* is centered below the staff.